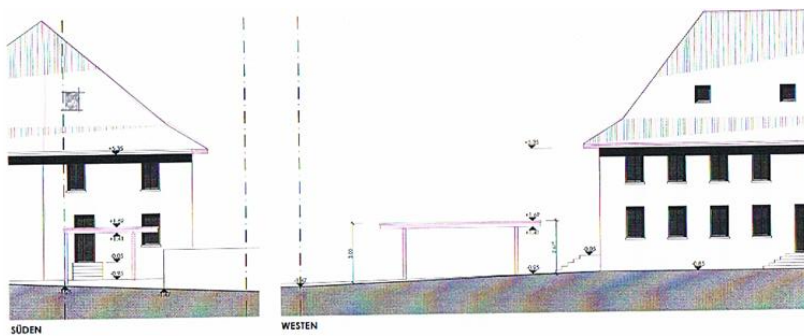


Neumattweg 1a, Stüsslingen, 5.05.2023. stv.



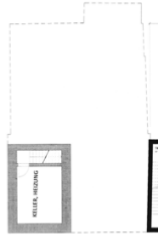
**ANSICHTEN AUTOINTERSTAND**

MILACKERWEG 7 4656 STÜSSLINGEN	MILACKERWEG 7 4656 STÜSSLINGEN	ST. 40370/5
PROJEKT	ANSICHTEN	M 1:100
Stevanin & Partner GmbH Postfach 122 4656 Stüsslingen Tel. 062 258 22 57	www.stevanin.ch	0027-1 003

STÜSSLINGEN, DEM  
BAUREISE  
ARCHITECT  
6.7.23  
STEVANIN & PARTNER GmbH  
MILACKERWEG 7  
4656 STÜSSLINGEN  
TEL. 062 258 22 57



2.OBERGESCHOSS 73 M<sup>2</sup>

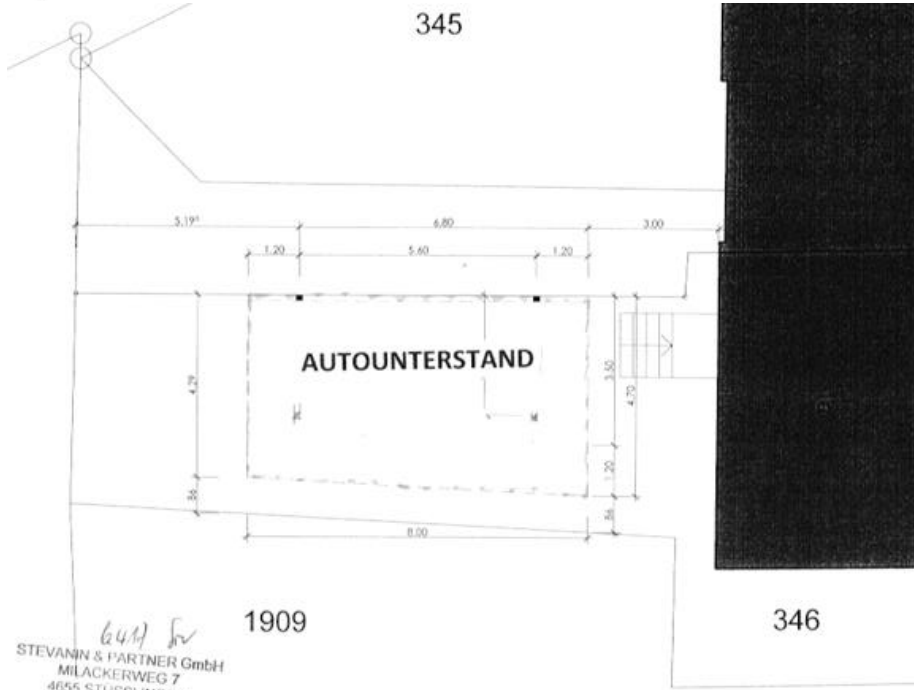


UNTERGESCHOSS 22 M<sup>2</sup>

*644* *fr*  
 STEVANIN & PARTNER  
 MILACKERWEG 7  
 4655 STUSSLINGEN  
 TEL 062 298 22 57

*644* *fr*  
 STEVANIN & PARTNER  
 MILACKERWEG 7  
 4655 STUSSLINGEN  
 TEL 062 298 22 57

345



1909

346

*644* *fr*  
 STEVANIN & PARTNER GmbH  
 MILACKERWEG 7  
 4655 STUSSLINGEN  
 TEL 062 298 22 57